

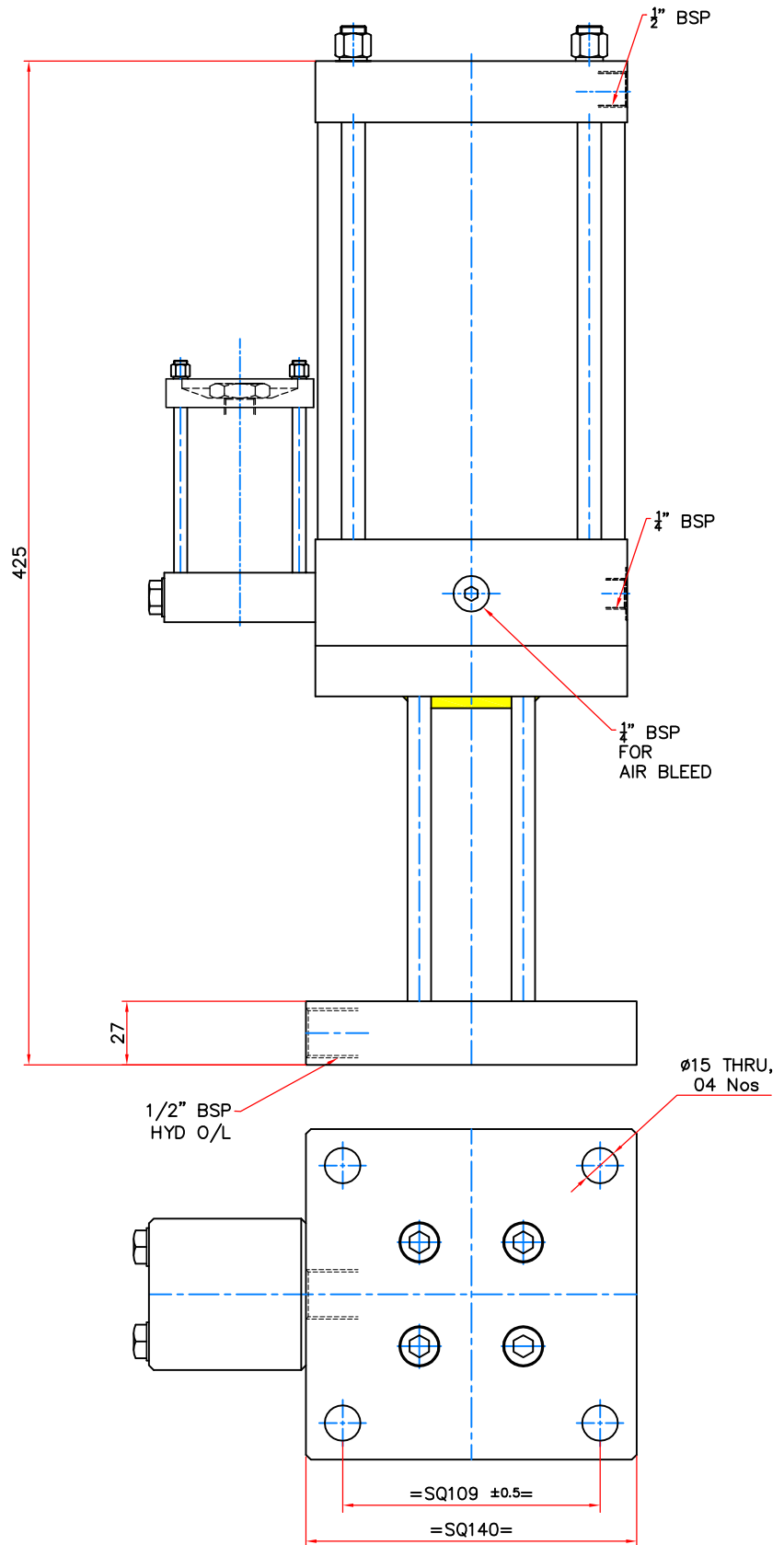
A

B


C

D

DO NOT MEASURE DRAWING . IF IN DOUBT PLEASE ASK.



▽	50	✓	N12
▽	25	✓	N11
▽	12.5	✓	N10
▽	6.3	✓	N9
▽	3.2	✓	N8
▽	1.6	✓	N7
▽	0.8	✓	N6
▽	0.4	✓	N5
▽	0.2	✓	N4
▽	0.1	✓	N3
▽	0.05	✓	N2
▽	0.025	✓	N1
Surface Finish	Ra Value—μ		
	Roughness No.		

Unspecified m/c deviations (med to IS 2102)			TITLE		HYDRO—PNEUMATIC INTENSIFIER DOUBLE ACTING				
Linear—Length or Diameter			MODEL		1330—100—050			Note: Remove all sharp corners 0.5x45° All dimensions are in mm unless specified	
Over	Upto & inc.	TOL	BORE		ø125			QTY	
—	6	±0.1	ROD		ø25				
6	30	±0.2	OIL OUTPUT		50 cc	SCALE		NTS	
30	120	±0.3	INT. RATIO		1:25	DRAWN	SKH	19/02/16	
120	315	±0.5	MOUNTING		FRONT FLANGE	CHKD	RBP	19/02/16	
315	1000	±0.8	RATED PR.		7 kg/cm²	APPD	RBP	19/02/16	ALTERATION
1000	2000	±1.2							
Length of shorter side of angle									
Over	Upto & inc.	TOL							
—	6	±1°							
6	30	±30°							
30	120	±20°							
120	315	±10°							

Preac

FLUID POWER

PRECISION ENGINEERING ACCESSORIES

PEENYA BANGALORE—58 INDIA

**Preac**  
FLUID POWER

PRECISION ENGINEERING ACCESSORIES

PEENYA BANGALORE-58 INDIA